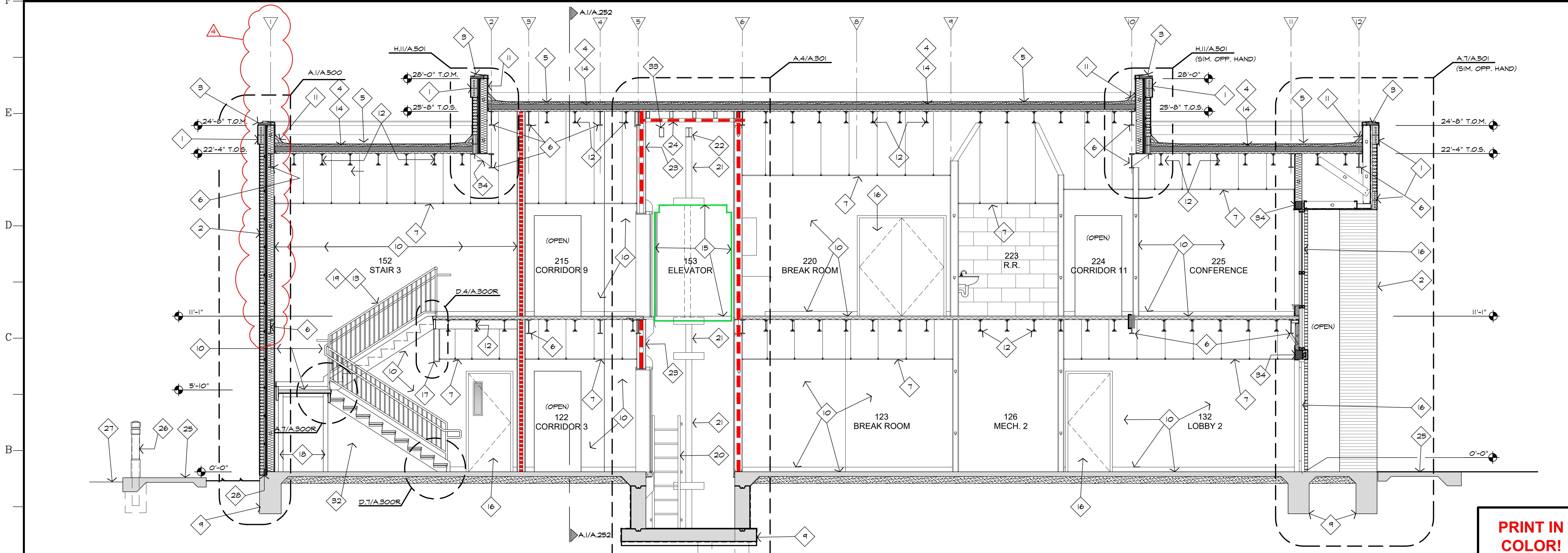


F.I. BUILDING SECTION
SCALE: 1/4" = 1'-0" (IF PRINTED IN 24" x 36" FORMAT)



A.I. BUILDING SECTION
SCALE: 1/4" = 1'-0" (IF PRINTED IN 24" x 36" FORMAT)

- KEYNOTES:**
- 1 TWO SOLDIER COURSES OF BRICK.
 - 2 BRICK VENEER, MATCH EXISTING BRICKS AND MORTAR IN COLOR, SIZE, COURSING TEXTURE, AND EVERY OTHER WAY.
 - 3 PRE-FINISH PARAPET CAP.
 - 4 LWC (LIGHTWEIGHT INSULATED CONCRETE).
 - 5 MODIFIED BITUMEN ROOFING (SEE A.190).
 - 6 STEEL BEAM . SEE STRUCTURAL DRAWINGS (SIZE VARIES).
 - 7 SUSPENDED ACOUSTICAL CEILING SYSTEM.
 - 8 FINISH GRADE.
 - 9 FOUNDATION. SEE STRUCTURAL DRAWINGS.
 - 10 SEE FINISH SCHEDULE.
 - 11 MODIFIED BITUMEN ON PARAPET.
 - 12 BAR JOISTS. SEE STRUCTURAL DRAWINGS.
 - 13 STAIR. SEE A.300.
 - 14 4 1/2" R20 MIN. EPS INSULATION.
 - 15 ELEVATOR. SEE A.4/A.301.
 - 16 SEE OPENING SCHEDULE. ***
 - 17 FURR DOWN. SEE J.11/A.130.
 - 18 COLUMN BELOW LANDING.
 - 19 SEE C.11/A.300.
 - 20 ELEVATOR LADDER. SEE STRUCTURAL DRAWINGS.
 - 21 ELEVATOR COLUMN. SEE A.301 AND STRUCTURAL DRAWINGS.
 - 22 HOIST BEAM. SEE A.301 AND STRUCTURAL DRAWINGS.
 - 23 ONE HOUR RATED SHAFT WALL U.L. DESIGN NO. U444.
 - 24 ENCLOSURE SHALL TERMINATE WITH A ONE HOUR RATED ASSEMBLY AS SHOWN IN U.L. ASSEMBLY U415 SYSTEM 4, OR U464.
 - 25 NEW SIDEWALK. SEE CIVIL DRAWINGS.
 - 26 NEW BOLLARD. SEE A.7/A.110.
 - 27 EXISTING DRIVENWAY.
 - 28 BRICK LEDGE TO BE 2 5/8" x 6 1/2". SEE STRUCTURAL DRAWINGS.
 - 29 EXISTING.
 - 30 NEW CONSTRUCTION.
 - 31 NEW EMERGENCY SCUPPER.
 - 32 GYPSUM BOARD ON ONE SIDE OF METAL STUD WALL TO PROHIBIT ACCESS TO AREA UNDER STAIR. EXTEND WALL FROM FLOOR TO UNDER SIDE OF STRINGER AND TO FURR DOWN ABOVE. SEE H.1/A.300.
 - 33 LIFELINE BEAM. SEE A.301 AND STRUCTURAL DRAWINGS.
 - 34 SEE STRUCTURAL DRAWINGS.
- *** SHOP DRAWINGS REQUIRED DOCUMENTING DESIGN FOR WIND LOAD OF 131 MPH, EXPOSURE B, RISK II, IN ACCORDANCE WITH ASCE 7-10. SHOP DRAWINGS ARE TO BE STAMPED BY AN ENGINEER LICENSED IN THE STATE OF LOUISIANA, INCLUDE FASTENING SCHEDULES AND DETAILS.

ADDENDUM NO. 4		05.14.2026
NO.	REVISIONS/SUBMISSIONS	DATE

Lynn Guidry
ARCHITECT

411 ARGENEAUX ROAD CARENCRO LOUISIANA 70520
337.896.6695 email: lynn@lynnguidryarchitect.com

CARENCRO
CITY HALL
EXPANSION
2026

210 EAST ST. PETER STREET CARENCRO, LOUISIANA

Drawing Title

BUILDING SECTIONS

	Designed LCG	Project No. 2024.006
	Drawn BP	Scale AS NOTED
	Checked LCG	Drawing No. A.250R
	Reviewed LCG	Date MAY 14, 2026
		40 OF 83

PRINT IN COLOR!
CERTAIN FEATURES OF THIS PAGE OF DRAWINGS ARE ONLY APPARENT IF THE PAGE IS PRINTED IN COLOR.